

Solar Skylights - Products

Rectangular & Square

- 320mm × 320mm
- 620mm × 620mm
- 320mm × 620mm
- 320mm × 1220mm



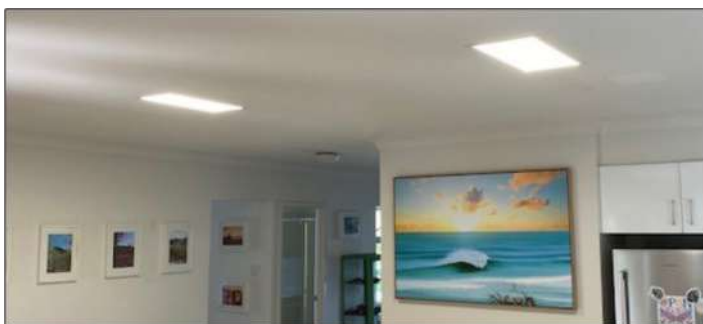
Round

- 120mm
- 170mm
- 225mm
- 300mm



Options and accessories:

- Night operations kit
- Wide range of extension & splitter leads
- Ceiling spacers
- Dimmers



Why Solar Whiz Skylight Alternatives?



- Easy to install and wire
- Put the lights exactly where you want them
- LEDs fit within the thickness of your ceiling plasterboard
- No need to cut or chisel ceiling joists to fit the LED underneath
- Only one solar panel to multiple lights resulting in
- Lower cost per installed solar skylight, when installing multiples
- Flexible layout & installation
- IC4 rated - for peace of mind (Easy and safe installation)
- Professional solar panel mounts available

Solar Whiz Lights - Applications:

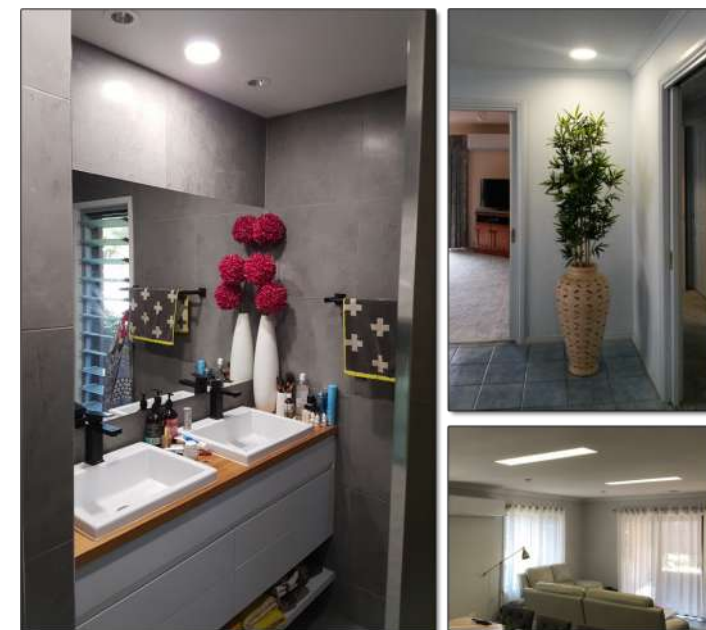
Bedrooms and media rooms	Rooms with limited natural light
Entrance halls	Hallways/corridors
Walk-in robes	Internal toilets & bathrooms
Pantries	Laundries
Garages	Offices
Shops	Commercial/Industrial settings

Since 2014

Solar Whiz Lights

Solar Skylights & Lighting

The perfect and cost effective solar alternative to intrusive traditional skylights



IC-4 Rated Solar LEDs! **IC4**

✓ Simple and easy installation!

Extra lights at minimal cost! 🌈

💡 Optional night-time operation!

Zero running costs! 💰

🚫 No carbon emissions!

Solar Whiz Lights

Solar-powered Skylight Alternative



Our Lights VS Traditional Skylights

Suitable for both single and multi-storey buildings

Skylight shaft limit viable installation options

Roof penetration the size of a finger

Large roof penetration

Easy and inexpensive installation

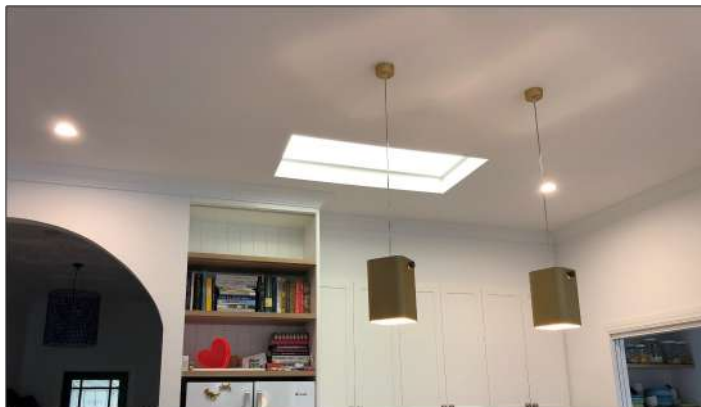
Difficult and expensive installation

Safe for fabrics & exposed surfaces

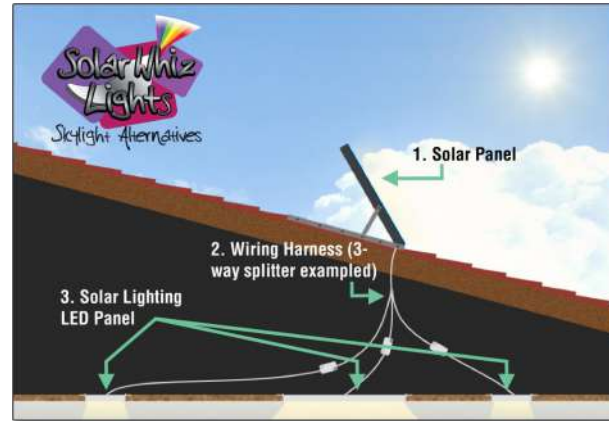
Fabrics & exposed surfaces damaged by UV light

No heat gain or loss

Significant heat gain or loss



How do Solar Whiz Lights work?



At its most basic level, Solar Whiz Lights work by collecting solar energy and transforming into a usable source of power for the LEDs.

Our LED panels are designed to brighten and dim with the available sunlight. More light on the PV panel outside means brighter light inside. Less light on the PV panel means dimmer light inside, mimicking a conventional skylight.

Additional Benefits of Solar Whiz Lights

- Optional constant light and night operations. A night operations kit connects the lights to mains power, only drawing energy when required.
- Single PV panel for up to 20 lights
- Adjustable solar panels to maximise solar exposure
- Solar Whiz Lights are very competitively priced

Tailor your own installation

Our wide range of solar and LED panels lets you tailor your installation with simple and flexible wiring options. You can also incorporate dimmers, night operation as well as on/off switches.

Circular Lights

Part Number	Power	PV Panel Wattage	Size	Lumen Flux
SWL7-120	6W	28W	Frame size: 120mm Hole: 105mm	480-540LM
SWL7-190	12W	28W	Frame size: 170mm Hole: 155mm	960-1080LM
SWL7-225	18W	28W	Frame size: 225mm Hole: 205mm	1440-1620LM
SWL7-300	24W	40W	Frame size: 300mm Hole: 275mm	1920-2160LM

Square/Rectangular Lights

Part Number	Power	PV Panel Wattage	Size	Lumen Flux
SWL6-320-320	18W	28W	Frame size: 320x320 Hole: 295X295	1620
SWL6-320-620	24W	40W	Frame size: 320x620 Hole: 295X595	2160
SWL6-620-620	36W	60W	Frame size: 620x620 Hole: 595X595	3600
SWL6-320-1220	36W	60W	Frame size: 320x1220 Hole: 295X1195	3600

Warranty

Solar Whiz Lights products are designed and manufactured for durability in Australian conditions and are backed by a substantial warranty. We have a 10 year replacement warranty on PV panels and a 4 year warranty on all other components.

Disclaimer: Global Eco & Environmental Solutions does not accept any responsibility for events that result from the use of this product or the information provided in this brochure.